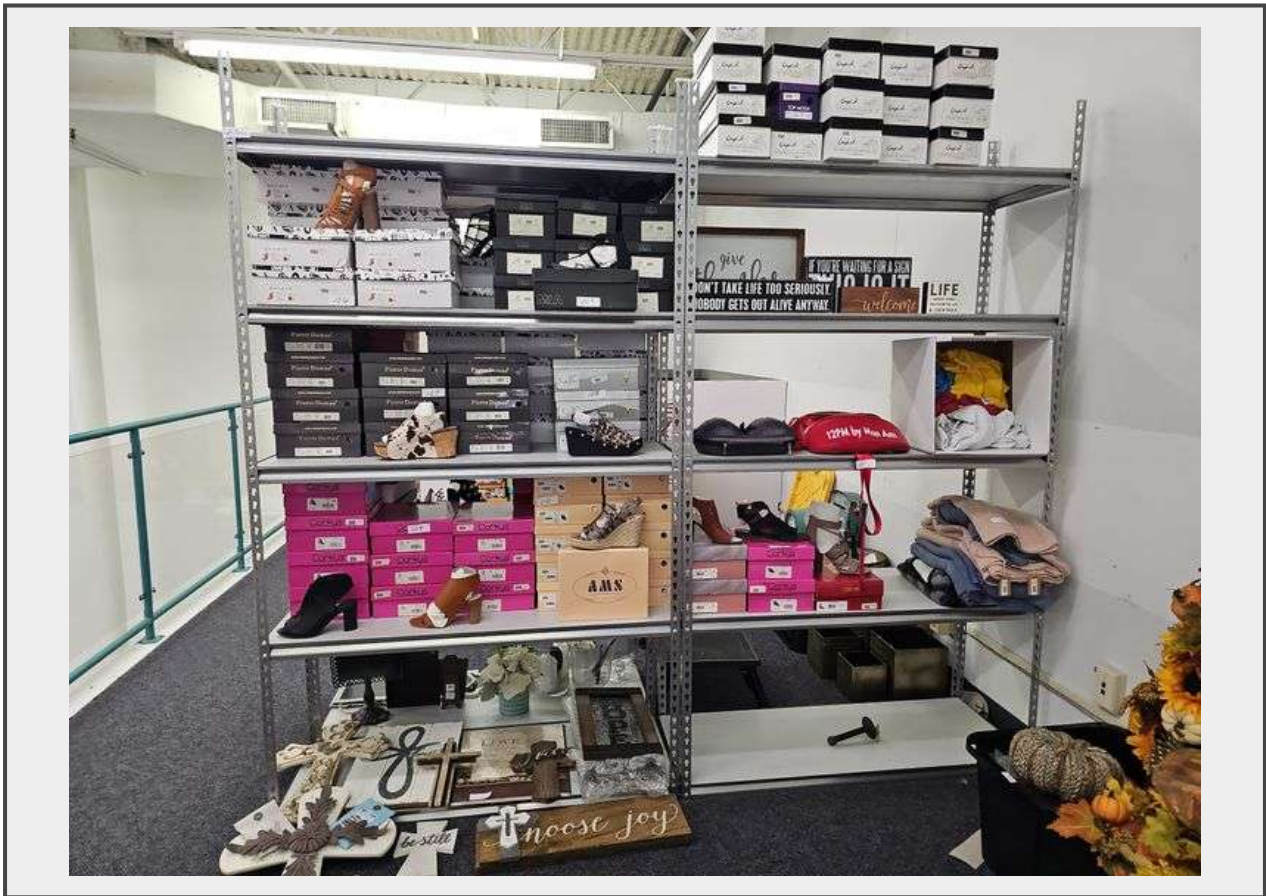


Sale Name: CLOSING NOW!!! SHORT NOTICE HUGE Boutique Warehouse Blowout Auction Ending Tuesday April 28th at 6pm

LOT 256 - MODULAR METAL WAREHOUSE SHELVING SYSTEM WITH 2pcs 86"H TOTAL TEARDROP UPRIGHTS, 18"x4' PRESSED WOOD SHELVES **Located upstairs, only hammer needed for disassembly, sold per unit



Description

MODULAR METAL WAREHOUSE SHELVING SYSTEM WITH 2pcs 86"H TOTAL TEARDROP UPRIGHTS, 18"x4' PRESSED WOOD SHELVES **Located upstairs, only hammer needed for disassembly, sold per unit

Quantity: 3



[https://
www.worldwideauctiongroup.com/](https://www.worldwideauctiongroup.com/)