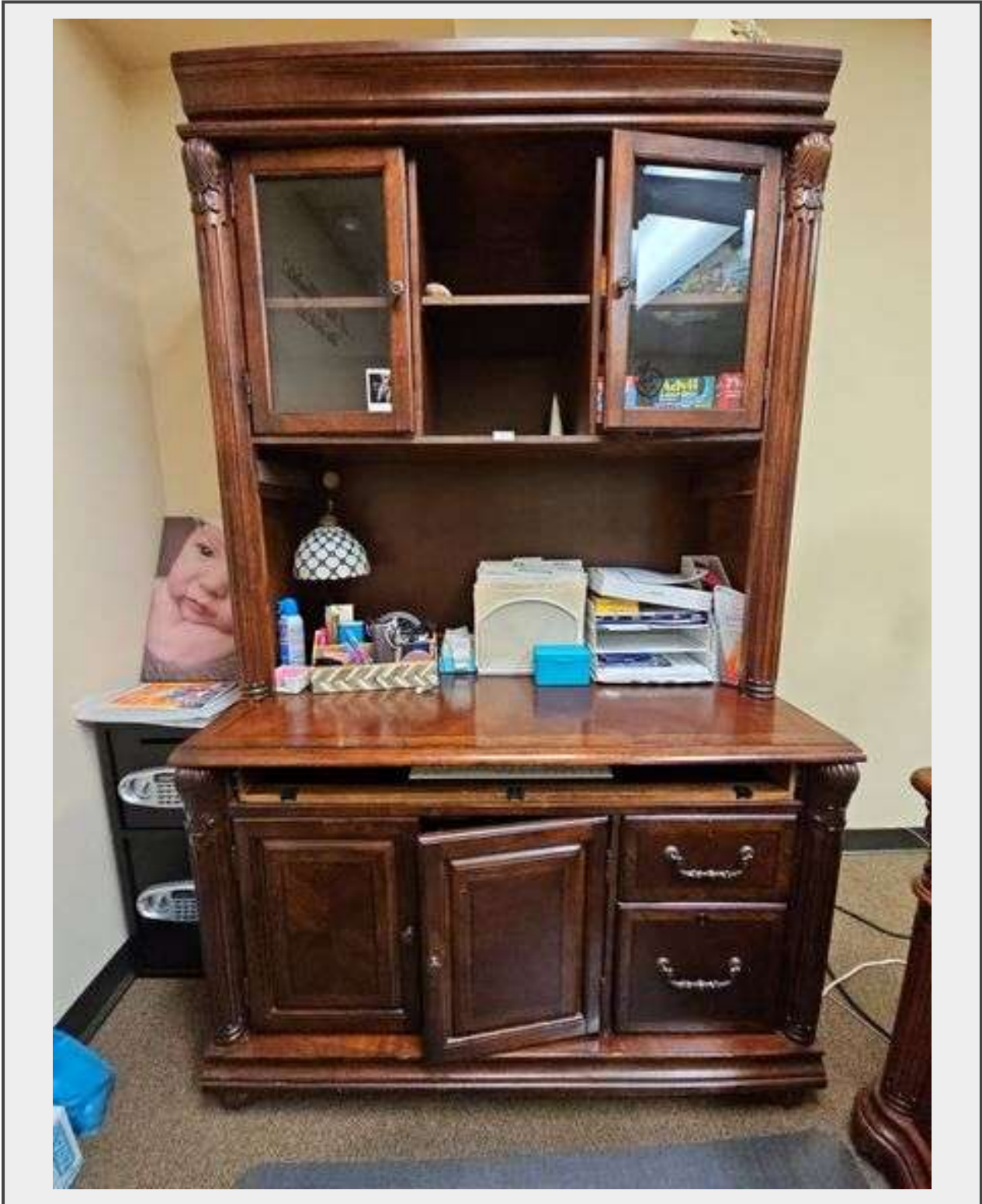


**Sale Name:** CLOSING NOW!!! SHORT NOTICE HUGE Boutique Warehouse Blowout Auction Ending Tuesday April 28th at 6pm

**LOT 35 - SOLID CHERRY WOOD ARMOIRE WITH BEAUTIFUL CARVED DESIGNS, 2-DRAWERS, BOTTOM CABINET WITH PULL OUT SHELVES APROX 4'x2'x7' MATCHES LOT 29 , 30, & 35**



**Description**

SOLID CHERRY WOOD ARMOIRE WITH BEAUTIFUL CARVED DESIGNS, 2-DRAWERS,  
BOTTOM CABINET WITH PULL OUT SHELVES APROX 4'x2'x7' MATCHES LOT 29 , 30, &  
35

**Quantity: 1**



**[https://  
www.worldwideauctiongroup.com/](https://www.worldwideauctiongroup.com/)**